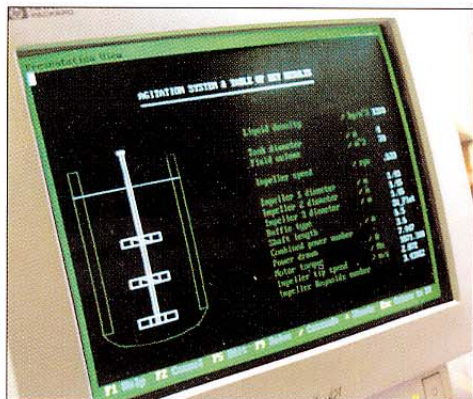


WGH RANGE OF MIXERS

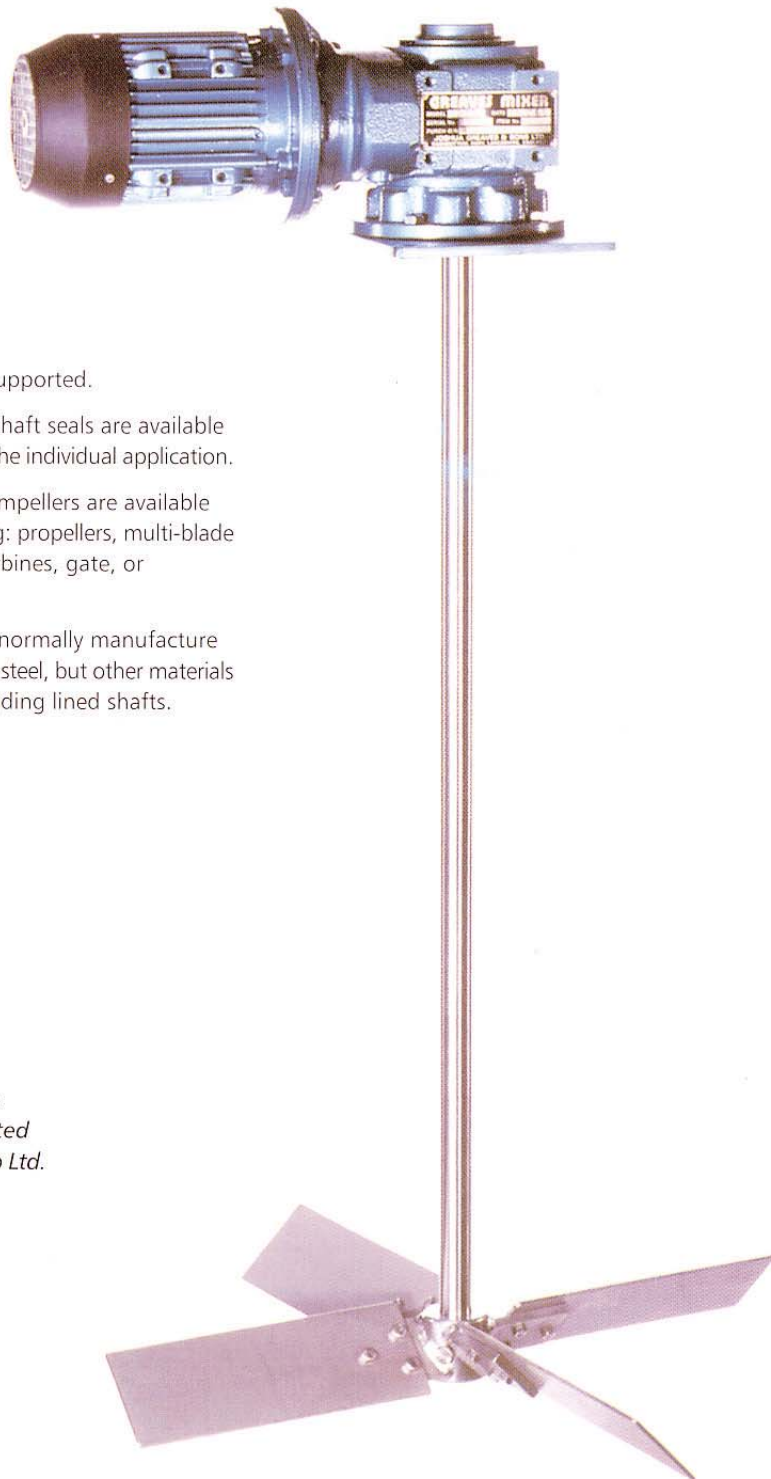
The WGH range of top entry mixers have a wide variety of mixing or agitating applications, each model, speed, power being individually selected to meet the optimum conditions of the application.

The features include

- 1 Low Headroom - compact heavy duty design.
- 2 Gearbox to mixer shaft coupling less drive ensures accurate alignment.
- 3 Large shaft diameters ensure long and trouble free life, with the operating speed designed to operate at 30% below the critical speed of the system.
- 4 Power ranges from 0.12kW to 45kW including pneumatic motors where required.
- 5 Beam or nozzle supported.
- 6 A wide range of shaft seals are available each selected for the individual application.
- 7 A wide range of impellers are available from the following: propellers, multi-blade pitched or flat turbines, gate, or anchor paddles.
- 8 Wetted parts are normally manufacture from 316 stainless steel, but other materials are available including lined shafts.



Computerised
individual design
program supported
by the BHR Group Ltd.



GREAVES

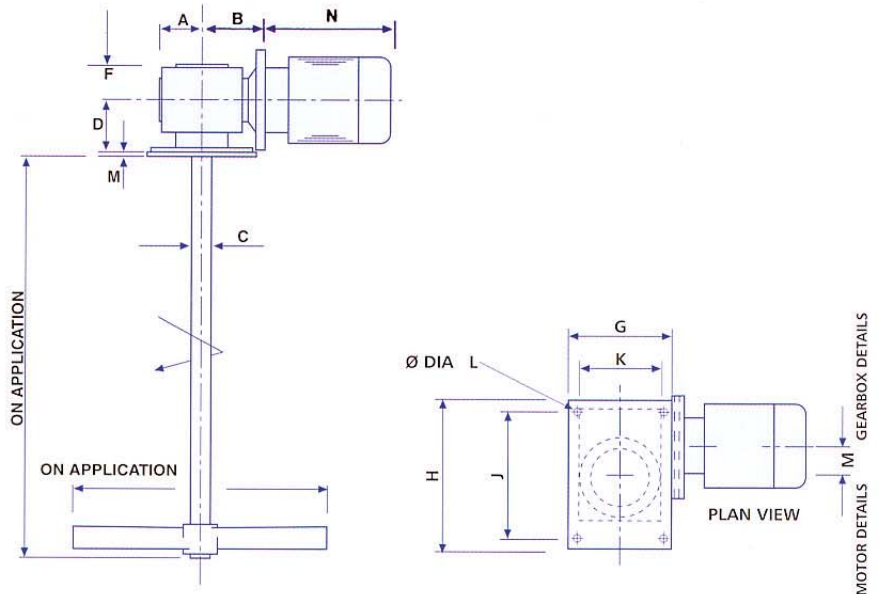
The WGH series of top entry mixers combine the compactness of a right angle drive without the use of a gearbox to mixer shaft coupling ensuring accurate alignment of shaft to gearbox operation.

A choice of mountings are available from either channel or flange, both are available with shaft seals where required.

The channel mounted model can be supplied with a light PTFE packed gland and the flangemounted with a high quality lip seal which is available in a comprehensive range of materials.

Shaft seals

A hollow shafted gearbox removes the requirement of a shaft coupling ensuring accurate alignment.

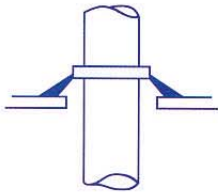


MODEL	A	B	C	D	F	G	H	J	K	L	M	N	N	N	N	N	N	MIN NOZZEL SIZE	*APPROX WT EXCLUDING MOTOR Kg
WGH 280	53	76	19	71	48	120	180	150	90	10	8	184						80	10
WGH 320	54	122	25	83	70	140	200	170	110	10	8	184						80	23
WGH 400	62	82	25	90	58	140	260	170	110	12	10	184	221					100	17
WGH 420	64	136	32	96	75	160	260	216	120	12	10		221					100	30
WGH 500	75	100	32	100	63	160	260	216	120	12	10		221	255	270			100	31
WGH 520	68	134	38	117	79	205	300	256	170	12	10			255	270			100	47
WGH 600	85	114	38	115	72	205	300	256	170	14	10			255	270			150	47
WGH 620	90	195	50	130	101	300	300	250	250	14	10			255	270			150	80
WGH 700	105	138	45	130	87	300	300	250	250	14	10			255	270	311	317	200	78
WGH 800	115	151	57	142	104	300	300	250	250	14	10				270	311	317	200	103

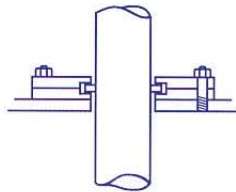
Note:
Dimension 'D' may increase as necessary to accommodate the shaft seal.

Mounting flange holes are drilled off centre lines.

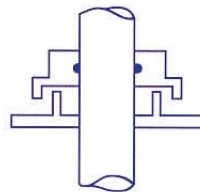
Choice of Seals



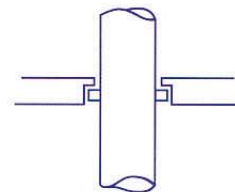
Vapour Seal
Vee ring seal suitable for flat vessel covers where the drive is supported on beams. **Materials** - Nitrile or viton rubber.



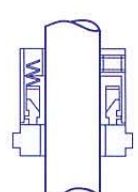
Low Pressure Seal
Light packed gland 0.7 bar pressure seal, suitable for flat vessel covers where the drive is supported on beams. **Materials** - PTFE others available.



Ventilation Seal
Inverted cup seal requires vessels cover to have a tubular upstand pipe. The seal prevents contamination. **Materials** - Stainless Steel.



Lip Seal
Low/medium pressure/vacuum seal normally installed in the mounting flange of the drive. **Materials** - Nitrile, viton, EPDM (food grade available) PTFE.



Mechanical Seal
Pressure/vacuum seal normally installed in the mounting flange of the drive. Double seal available for specific processes. **Materials** - A comprehensive range of materials are available to suit each application.

Joshua Greaves & Sons Ltd

Atlas Engineering Works, Garden Street, Ramsbottom, Bury, Lancashire BLO 9BG, England

Tel: 01706 824191 Fax: 01706 823000

Email: greavesmixer@btconnect.com

Web: www.greaves.co.uk

