

GFL RANGE OF MIXERS

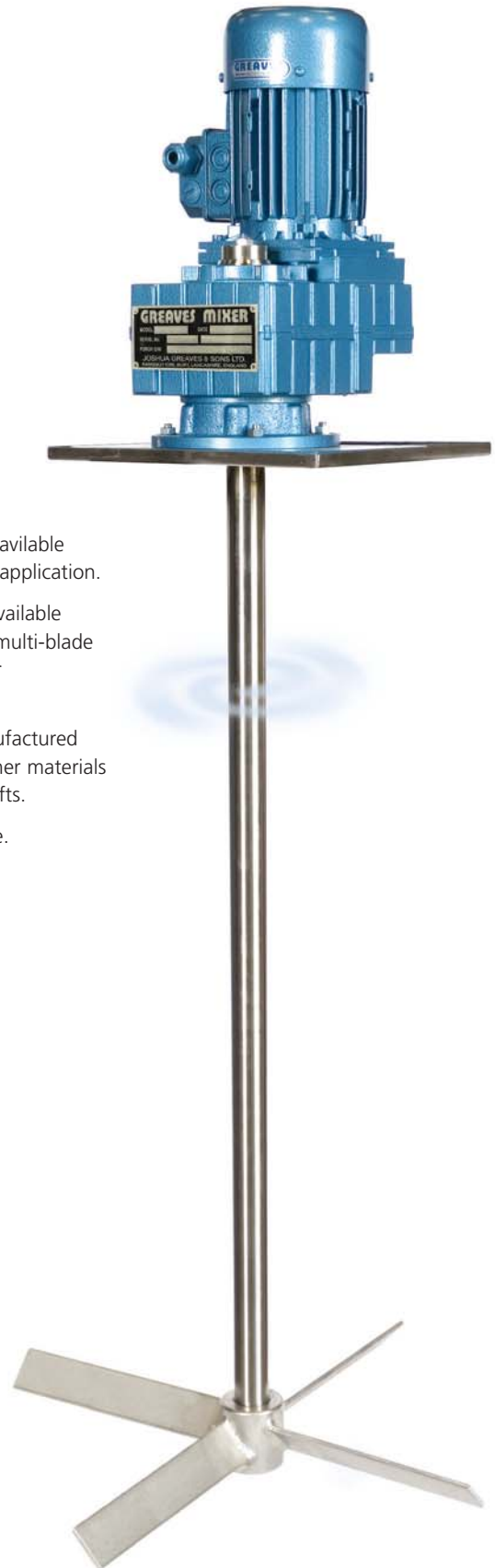
The GFL range of top entry mixers have a wide variety of mixing or agitating applications, each model, speed, power being individually selected to meet the optimum conditions of the application.

The features include

- 1 Energy efficient parallel / helical gearbox.
- 2 Gearbox to mixer shaft coupling less drive ensures accurate alignment.
- 3 Large shaft diameters ensure long and trouble free life, with the operating speed designed to operate at 30% below the critical speed of the system.
- 4 Power ranges from 0.12kW to 45kW including pneumatic motors where required.
- 5 Beam or nozzle supported.
- 6 A wide range of shaft seals are available each selected for the individual application.
- 7 A wide range of impellers are available from the following: propellers, multi-blade pitched or flat turbines, gate, or anchor paddles.
- 8 Wetted parts are normally manufactured from 316 stainless steel, but other materials are available including lined shafts.
- 9 ATEX approved models available.



Computerised individual design services available



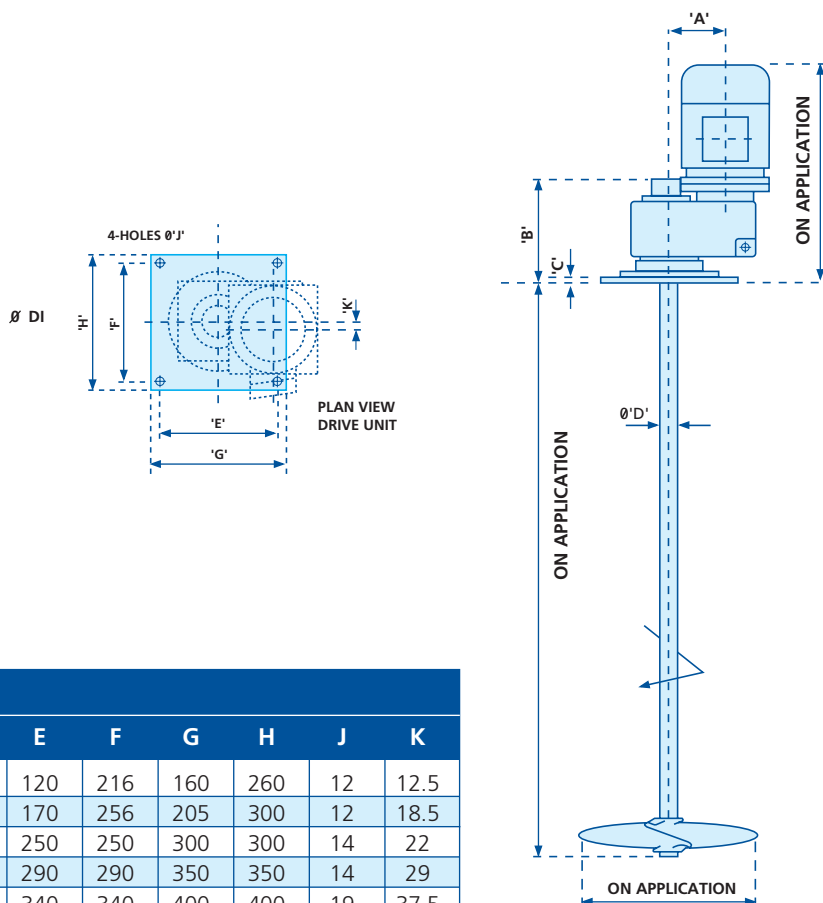
The GFL series of top entry mixers combine the efficiency of a parallel drive without the use of a gearbox to mixer shaft coupling ensuring accurate alignment of shaft to gearbox operation.

A choice of mountings are available from either channel or flange, both are available with shaft seals where required.

The channel mounted model can be supplied with a light PTFE packed gland and the flange mounted with a range of high quality lip seals which are available in a comprehensive range of materials.

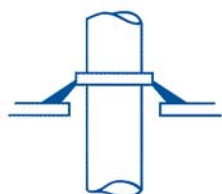
Shaft seals

A hollow shafted gearbox removes the requirement of a shaft coupling ensuring accurate alignment.



Size	Dimensions									
	A	B	C	D	E	F	G	H	J	K
GFL 420	90.5	189	10	32	120	216	160	260	12	12.5
GFL 520	112.5	216	10	38	170	256	205	300	12	18.5
GFL 620	140	250	10	45	250	250	300	300	14	22
GFL 720	173	304	12	57	290	290	350	350	14	29
GFL 920	220	352	12	70	340	340	400	400	19	37.5
GFL 1120	276.5	415	15	82	390	390	450	450	19	50
GFL 1420	339	488	15	115	440	440	500	500	22	65

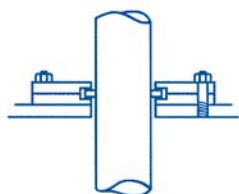
Choice of Seals



Vapour Seal

Vee ring seal suitable for flat vessel covers where the drive is supported on beams.

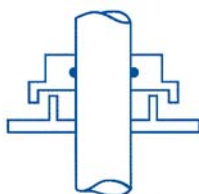
Materials - Nitrile or viton rubber.



Low Pressure Seal

Light packed gland 0.7 bar pressure seal, suitable for flat vessel covers where the drive is supported on beams.

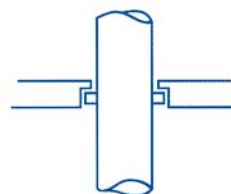
Materials - PTFE others available.



Ventilation Seal

Inverted cup seal requires vessels cover to have a tubular upstand pipe. The seal prevents contamination.

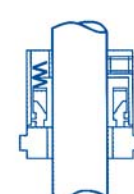
Materials - Stainless Steel.



Lip Seal

Low/medium pressure/ vacuum seal normally installed in the mounting flange of the drive.

Materials - Nitrile, viton, EPDM (food grade available) PTFE.



Mechanical Seal

Pressure /vacuum seal normally installed in the mounting flange of the drive. Double seal available for specific processes.

Materials - A comprehensive range of materials are available to suit each application.



A comprehensive range of impellers are available

List No. 248

Joshua Greaves & Sons Ltd

Atlas Engineering Works, Garden Street, Ramsbottom, Bury, Lancashire BL0 9BG, England

Tel: 01706 824191 Fax: 01706 82300

Email: greavesmixer@btconnect.com

Web: www.greaves.co.uk

